

**ISDP**

International Society for  
Developmental Psychobiology

[www.isdp.org](http://www.isdp.org)



Catamaran Resort Hotel, San Diego, California, USA - November 6-9, 2013

**46<sup>TH</sup> ANNUAL MEETING  
CONFERENCE PROGRAM**

# International Society for Developmental Psychobiology

## Officers

### **PRESIDENT**

Janice Juraska  
University of Illinois

### **PRESIDENT-ELECT**

Pamela S. Hunt  
College of William & Mary

### **PAST PRESIDENT**

Scott R. Robinson  
Idaho State University

### **SECRETARY**

Michele Brumley  
Idaho State University

### **TREASURER**

Jane Herbert  
University of Sheffield

### **BOARD MEMBERS**

Karen Adolph  
New York University

Susanne Brummelte  
Wayne State University

Tanya Roth  
University of Delaware

### **PROGRAM DIRECTOR**

Susan E. Swithers  
Purdue University

### **CONFERENCE COORDINATOR**

Julien Gross  
University of Otago

### **FEDERATION REPRESENTATIVE**

Pamela S. Hunt  
College of William & Mary

### **AAALAC REPRESENTATIVE**

Sonia Cavigelli  
Pennsylvania State University

### **STUDENT MEMBER REPRESENTATIVES**

Julie Campbell  
University of North Carolina Greensboro

Emily Marcinowski  
University of North Carolina at Greensboro

### **WEBMASTER**

Marianne Van Wagner  
ISDP Central Office

### **HISTORIAN**

William Shoemaker  
University of Connecticut Health Center

*The ISDP would like to express our appreciation for the financial support from the following organizations:*

**Wiley**

**Sackler Institute for Developmental Psychobiology at Columbia University**

**Eunice Kennedy Shriver National Institute of Child Health & Human Development**

**Mead Johnson Nutrition**

**Salimetrics**

**Columbia University Nurture Science Program**

**Members of the International Society for Developmental Psychobiology**



The IPBBN pre-conference is generously supported by the Sackler Institute for Developmental Psychobiology and by the International Society for Developmental Psychobiology

**Wednesday, November 6**

**Pre-conference: The International Perinatal Brain and Behavior Network (IPBBN): A workshop on emerging results from studies of the auditory ecology of the NICU and the preterm infant's response to sounds - Marquesas Suite 308**

**Organizers: Carolyn Granier-Deferre, Bill Fifer, Christine Moon**

2:00-2:10 Greetings

2:10-3:10 Pierre Kuhn, M.D., Ph.D.  
Médecine et réanimation néonatales, Centre Hospitalier Universitaire de Strasbourg - Laboratoire de Neurosciences Cognitives et Adaptatives, UMR 7364 CNRS/UdS, France.

The ontogeny of very preterm infants' sensitivity to incubator sounds: Impact on well-being  
The presentation will focus on the physiological, cerebral and behavioral responsiveness of vulnerable very preterm infants to acoustic changes in their incubator, and their main determinants. The impact of this atypical environment on their well-being (and later development) will be discussed.

3:10-4:10 Amir Lahav, Sc.D., Ph.D.  
Assistant Professor of Pediatrics, Harvard Medical School; Department of Newborn Medicine, Brigham and Women's Hospital; Department of Pediatrics, Massachusetts General Hospital for Children

Reproducing the prenatal experience with maternal auditory stimulation: Evidence from premature infants  
This presentation will discuss the role of maternal sensory stimulation and womb-like sounds in the development of preterm neonates. We will present data showing how biologically-meaningful auditory experience in the early postnatal period can facilitate healthy growth and neurodevelopment in early infancy.

4:10-4:20 Break

4:20-5:20 Manuela Filippa, Doctoral candidate

UFR des Sciences Psychologiques et Sciences de l'Éducation, Université Paris-Ouest Nanterre-La Défense, France.

Live maternal speech and singing have beneficial effects on hospitalized preterm infants  
A renewed connection to the mother's voice can be an important and significant experience for preterm infants. Exposure to maternal contingent speech and singing shows significant early beneficial effects on preterm infant's physiological state such as oxygen saturation levels, number of critical events and prevalence of calm alert state. These findings have implications for interventions in NICU encouraging maternal interaction with their medically stable preterm infants.



**International Society For Developmental Psychobiology  
46th Annual Meeting**

**Wednesday, November 6**

5:00-8:00 **ISDP Registration – Main Lobby**

5:30-7:30 **ISDP Board Meeting – Boardroom**

8:00-10:00 **ISDP Opening Reception – Aviary Ballroom**

**Thursday, November 7**

7:00-8:00 **Student/Post-doc Breakfast Chat Session – Boardroom**

7:00-8:00 **Continental Breakfast and Coffee/Tea – Kon Tiki Foyer**

8:00-10:00 **Symposium: DEVELOPMENTAL PLASTICITY IN THE CONTROL AND FUNCTIONAL RECOVERY OF MOTOR BEHAVIOR.** Chair: Michele Brumley - **Kon Tiki Ballroom**

8:10-8:15 INTRODUCTION: Michele Brumley

8:15-8:35 SKILL ACQUISITION IN INFANTS WITH DOWN SYNDROME AND SPINA BIFIDA  
B.D. Ulrich

8:35-8:55 SENSORY REGULATION OF SPONTANEOUS LIMB MOVEMENTS IN THE EMBRYONIC CHICK  
A.A. Sharp

8:55-9:15 EXPERIENTIAL REGULATION OF COORDINATED ACTION PATTERNS IN THE NEWBORN RAT  
M.R. Brumley

9:15-9:35 DEVELOPMENT OF WALKING AND IMPLICATIONS FOR IMPROVING WALKING AFTER EARLY BRAIN INJURY  
J. Yang

9:35-10:00 DISCUSSION  
S.R. Robinson, Discussant

10:00-10:20 **Morning Break – Kon Tiki Foyer**

10:20-11:35 **Oral Session 1: SOCIAL SKILLS AND LEARNING**  
Chair: Robyn Hudson – **Kon Tiki Ballroom**

10:20-10:35 SOCIBILITY AND THE ONTOGENY OF COURTSHIP SKILLS IN FEMALE BROWN-HEADED COWBIRDS (MOLOTHRUS ATER)  
G.M. Kohn

10:35-10:50 IMPAIRED HUDDLING IN OXYTOCIN KNOCKOUT MOUSE PUPS: MULTIPLE DEFICITS AND OXYTOCIN-DEPENDENT MECHANISMS  
C. Harshaw, J. Culligan, J. R. Alberts.

10:50-11:05 ELEVATION OF PRENATAL PROGESTERONE ENHANCES POSTNATAL AUDITORY LEARNING IN

BOBWHITE QUAIL NEONATES (COLINUS VIRGINIANUS)  
J.A. Herrington, C. Vallin, R. Lickliter

11:05-11:20 EMERGENCE AND RETENTION OF LEARNING IN EARLY FETAL DEVELOPMENT  
C. Krueger

11:20-11:35 DECREASED ASSOCIATIVE LEARNING CAPACITIES IN LATE PRETERM AND EARLY TERM NEWBORNS  
N. Burtchen, J.S. Yang, P.D. Balsam, J.R. Isler, J. Piravique, T. Thai, M.M. Myers, W.P. Fifer

11:35-1:30 **Mid-Day Break**

11:35-1:30 **Wiley Editorial Lunch - Boardroom**

1:30-2:45 **Oral Session 2: MATERNAL INFLUENCES**  
Chair: April Ronca – **Kon Tiki Ballroom**

1:30-1:45 LATERALITY OF FETAL TOUCH IN RELATION TO MATERNAL STRESS  
N. Reissland, B. Francis, E. Aydin

1:45-2:00 LIVE MATERNAL SPEECH AND SINGING HAVE BENEFICIAL EFFECTS ON HOSPITALISED PRETERM INFANTS  
M. Filippa, E. Devouche, C. Arioni, M. Imberty, M. Gratie

2:00-2:15 MATERNAL SENSORY STIMULATION DURING THE POSTNATAL PERIOD FACILITATES GROWTH, DEVELOPMENT, AND BRAIN MATURATION IN EXTREMELY PREMATURE INFANTS  
A. Lahav, E. Zimmerman, A. Webb, K. Rand, E. McMahon

2:15-2:30 THE EFFECTS OF ETHANOL AND STRAIN ON MATERNAL CARE IN RATS.  
D.O. Popoola, M. E. Nizhnikov, J.E. Sanders, N.E. Spear, N.M. Cameron.

2:30-2:45 LITTER AND SEX EFFECTS ON MATERNAL BEHAVIOR AND DNA METHYLATION OF THE NR3C1 GENE IN HIPPOCAMPUS AND CEREBELLUM  
T.A. Kosten, W. Huang, D.A. Nielsen.

2:45-3:00 **Afternoon Break – Kon Tiki Foyer**

3:00-4:45 **Sackler Symposium: COMMUNICATING DEVELOPMENTAL PSYCHOBIOLOGY.** Chair: Hawley Montgomery-Downs – *Kon Tiki Ballroom*

3:00 - 3:05 INTRODUCTION  
3:05-3:25 COMMUNICATING DEVELOPMENTAL PSYCHOBIOLOGY IN THE CLASSROOM  
D. Miller  
3:25-3:45 COMMUNICATING DEVELOPMENTAL PSYCHOBIOLOGY TO THE GOVERNMENT  
H. Hayne  
3:45-4:05 COMMUNICATING DEVELOPMENTAL PSYCHOBIOLOGY TO NATIVITSTS  
R. Lickliter  
4:05-4:25 COMMUNICATING DEVELOPMENTAL PSYCHOBIOLOGY TO OTHER RESEARCHERS AND CLINICIANS  
W. Fifer  
4:25-4:45 DISCUSSION

5:30-7:30 **Poster Session 1 (Cash Bar) – Aviary Ballroom**

1. HIGH FAT DIET IS ASSOCIATED WITH POMC CPG METHYLATION DURING PERINATAL PROGRAMMING. A. Marco, T. Kisliouk, T. Tabachnik, Y. Lavi, L. Eliyahu, N. Meiri, A. Weller.
2. IS POSITION IN THE LITTER HUDDLE ASSOCIATED WITH DIFFERENCES IN BROWN ADIPOSE TISSUE THERMOGENESIS IN NEWBORN RABBITS? E. Garcia-Torres, F. Castelan, M. Martinez-Gomez, A. Bautista, R. Hudson
3. CONTRIBUTION OF INTRA-LITTER INTERACTIONS TO THE DEVELOPMENT OF INDIVIDUAL DIFFERENCES IN RABBIT PUPS. J.A. Zepeda, V. Reyes-Meza, M. Martinez-Gomez, R. Hudson and A. Bautista
4. DEPRESSIVE-LIKE RESPONDING AND ITS RELATION TO INFANT TEMPERAMENT IN ADULT MALE RHESUS MACAQUES. M.B. Hennessy, B.J. McCowan, J.P. Capitanio.
5. ASSESSING VARIATION IN INFANT RHESUS MONKEYS (MACACA MULATTA): A BIOBEHAVIORAL ASSESSMENT PROGRAM AT THE CALIFORNIA NATIONAL PRIMATE RESEARCH CENTER. J.P. Capitanio, K. Hinde, K. Chun, E. Kinnally, D. Gottlieb

6. DIFFERENTIAL REARING CONDITIONS AFFECT EMOTIONAL REACTIVITY IN BOBWHITE QUAIL (*Colinus virginianus*) CHICKS. E.J. Martinez, J. A. Herrington, R. Lickliter
7. DEVELOPMENTAL CHANGES IN AMYGDALA-BASED FEAR LEARNING: FROM EARLY CHILDHOOD THROUGH ADULTHOOD. D.S. Lumian, L.J. Gabard-Durnam, B. Goff, D.G. Gee, J.E. Flannery, N. Tottenham
8. NEOCORTICAL TET3-MEDIATED ACCUMULATION OF 5-HYDROXYMETHYLCYTOSINE PROMOTES RAPID BEHAVIORAL ADAPTION. X. Li, W. Wei, Q.Y. Zhao, J. Widagdo, D. Baker-Andresen, C.R. Flavell, A. D'Alessio, Y. Zhang, T.W. Bredy
9. NEGATIVE SOCIAL AND PHYSIOLOGICAL EFFECTS OF NEONATAL OXYTOCIN EXPOSURE: IMPLICATIONS FOR AUTISM. P.A. Kabitzke, D. Brunner
10. USING THE CONTEXT PREEXPOSURE FACILITATION EFFECT TO STUDY THE ONTOGENY OF LONG-TERM MEMORY. P.A. Robinson-Drummer, M.E. Stanton
11. EGR-1 MRNA EXPRESSION PATTERNS IN THE PREFRONTAL CORTEX, HIPPOCAMPUS, AND AMYGDALA DURING THE CONTEXT PRE-EXPOSURE FACILITATION EFFECT IN JUVENILE RATS. W.B. Schreiber, A. Asok, S.A. Jablonski, J.B. Rosen, M.E. Stanton
12. EARLY LIFE ABUSE INCREASES ACTIVE FEAR EXPRESSION AND ABOLISHES MATERNAL PROTECTION OF PUPS. R.E. Perry, R.M. Sullivan
13. ONTOGENY OF CONTEXT FEAR GENERALIZATION AND SPECIFICITY IN THE RODENT. I. Zhuravka, A.M. Poulos
14. EARLY INFANT-CAREGIVER EXPERIENCES AND THEIR EFFECTS ON AMYGDALA GENE CORRELATES OF SOCIAL INTERACTION AND ANXIETY. K.A. Taylor, M. Warren, T.L. Roth
15. DECREASING FEARFULNESS THROUGH PRENATAL AND POSTNATAL EXPOSURE TO FEAR-INDUCING AUDITORY STIMULI. M. Suarez, R. Lickliter
16. EARLY LIFE PERTURBATIONS OF 5HT2 RECEPTOR LEAD TO DISRUPTED ANXIETY RELATED BEHAVIOR IN ADULTHOOD. P. Chachra, A. Sarkar, V.A. Vaidya

17. MATERNAL ANTIDEPRESSANT USE ALTERS HIPPOCAMPAL PLASTICITY AND STRESS-RELATED BEHAVIOUR OF MALE AND FEMALE OFFSPRING. A.R. Gobinath, J.L. Workman, L.A.M. Galea
18. RESILIENCE IN THE FACE OF EARLY LIFE ADVERSITY: FEARFUL TEMPERAMENT AND PERIPUBERTAL SOCIAL STRESS DO NOT AFFECT THE ADRENOCORTICAL RESPONSE TO AN ADULT SOCIAL CHALLENGE. M.J. Caruso, H. You, M.K. McClintock, S.A. Cavigelli
19. CONTEXT-DEPENDENT MATERNAL CARE MODULATES EARLY EXPERIENCE EFFECT ON OFFSPRING STRESS REGULATION. J. F.L. Pinner, S.M. Dinces, R.D. Romeo, B.S. McEwen, A.C. Tang
20. UNPREDICTABLE VARIABLE PRENATAL STRESS PROGRAMS ENDURING SEXUALLY DIMORPHIC EFFECTS ON BODY WEIGHT REGULATION AND ANXIETY. A.E. Ronca, J.L. Bollinger, K.M. Strickland, P.L. Scott, C.D. Tulbert, J.J. Morgan, L.A. Baer
21. STEPPING BEHAVIOR INCREASES ON A NON-MOVING, BUT NOT A MOVING, TREADMILL BELT IN WEIGHT-SUPPORTED NEONATAL RATS. T.S. Doherty, M.M. Strain, D. Tappan, M.R. Brumley.
22. PERSISTENT EFFECTS OF A PROPRIOCEPTIVE PERTURBATION ON EXPRESSION OF A REFLEXIVE ACTION PATTERN IN NEONATAL RATS. V. Mendez-Gallardo, R.C. Bean, M.R. Brumley.
23. EXPRESSION OF A NEWBORN HINDLIMB REFLEX IS MODIFIED AFTER EXPOSURE TO RANGE OF MOTION (ROM) RESTRICTION. J.T. Allmond, S. Belnap, S. Boomhower, M.E. Roberto, M.R. Brumley.
24. BILATERAL STEP FREQUENCIES, RATES, AND PHASE RELATIONSHIPS FOLLOWING TREATMENT WITH QUIPAZINE: A DOSE-RESPONSE STUDY IN NEWBORN RATS. H. E. Swann, A. M. Van Orden, R.B. Kempe, M. Hillman, M.R. Brumley
25. INTRAUTERINE POSITION AND POSTNATAL COMPETITIVENESS AMONG SIBLINGS IN THE DOMESTIC RABBIT. V. Reyes-Meza, E. Cruz, M. Martinez-Gomez, R. Hudson, A.Bautista
26. STUDY OF HANDEDNESS AND VISUOMOTOR PERFORMANCE IN PRESCHOOL CHILDREN USING A PATTERN RECOGNITION SYSTEM. V. Reyes-Meza, J.M. Castro-Manzano, J. Lopez-Martinez, Morales-Villalobos L
27. HOW LATERALITY INFLUENCES PROBLEM-SOLVING IN MONKEYS AND HUMANS. S.N. Albright, M. Soula, E.L. Nelson
28. HOW CONSISTENCY IN HANDEDNESS IS RELATED TO LANGUAGE DEVELOPMENT. E.L. Nelson, J.M. Campbell, E.C. Marcinowski, G.F Michel
29. FROM ACQUISITION TO ROLE-DIFFERENTIATED BIMANUAL MANIPULATION: SEQUENCE OF ACTIONS IN CHILDREN WITH DIFFERENT HANDEDNESS STATUS. I. Babik, J.M. Campbell, G.F. Michel
30. THE DEVELOPMENT OF HANDEDNESS FOR UNIMANUAL MANIPULATION IN INFANTS WITH DIFFERING HANDEDNESS FOR ACQUISITION. J.M. Campbell, I. Babik, E. Marcinowski, G.F. Michel.
31. CONSTRUCTING DURING INFANCY PREDICTS SUBSEQUENT DEVELOPMENT OF COMPREHENSION OF SPATIAL PREPOSITIONS. E.C. Marcinowski, J.M. Campbell, G.F. Michel
32. THE DEVELOPMENT OF HAND PREFERENCE IN INFANTS BETWEEN 8 AND 14 MONTHS. J. Latta, J. Campbell, Dr. G. Michel
33. SIMPLE AND DIFFICULT ROLE-DIFFERENTIATED BIMANUAL MANIPULATION SKILLS MIGHT PROVIDE DIFFERENT INSIGHTS INTO THE DEVELOPMENT OF INFANT HANDEDNESS. C.A. McKenney, I. Babik, and G.F. Michel
34. THE INFLUENCE OF MOTOR AND LANGUAGE ONSETS ON INFANT LATERALIZATION. J.K. Ducz, S.E. Berger
35. WALKING TO THE BEAT OF THEIR OWN DRUM: DIFFERENCES IN HOW CHILDREN AND ADULTS MEET TASK CONSTRAINTS. S.V. Gill, Isha Vora, D.G. Kelty-Stephen
36. THE MEDIAL LONGITUDINAL ARCH AS AN ADAPTATION TO INCREASE STEP LENGTH IN CHILDREN. S.V. Gill, J.M. DeSilva, D.G. Kelty-Stephen, S. Keimig
37. ADAPTIVE BALANCE CONTROL STRATEGIES DURING INFANT SITTING. K.C. Soska, L.B. Hurwitz, K.E. Adolph
38. SIMULTANEOUS USE OF TWO ACTIGRAPHS IN THE STUDY OF INFANTS' SLEEP: A COMPARISON BETWEEN RECORDS OBTAINED FROM THE RIGHT AND LEFT LEG. A. Scher, O. Atun-Einy
39. WHAT DO POSTPARTUM WOMEN DO WHILE THE REST OF THE WORLD IS ASLEEP? A.L. McBean, H.E. Montgomery-Downs

**Friday, November 8**

7:00-8:00 **Continental Breakfast and Coffee/Tea – Kon Tiki Foyer**

8:00-10:20 **Symposium: EXPERIENCES WITH DRUGS DURING ADOLESCENCE: POTENTIAL MECHANISMS OF ADOLESCENT VULNERABILITY TO ADDICTION AS REVEALED BY ANIMAL MODELS.** Chairs: Jhodie R. Duncan, Joshua M. Gulley, Jee H. Kim – **Kon Tiki Ballroom**

8:00-8:20 SENSITIVITY TO REWARD AND COGNITIVE CONTROL FUNCTION IN COCAINE USERS AND NON-DEPENDENT OBSESSIVE ALCOHOL DRINKING ADOLESCENTS  
R. Hester

8:20-8:40 CHRONIC INTERMITTENT INHALATION OF THE VOLATILE SOLVENT TOLUENE DURING ADOLESCENCE ALTERS BRAIN FUNCTION IN ADULTHOOD  
J.R. Duncan

8:40-9:00 NICO-TEEN: NEUROCHEMICAL MECHANISMS THAT MEDIATE ENHANCED VULNERABILITY TO TOBACCO USE DURING ADOLESCENCE  
L. O'Dell

9:00-9:20 ADOLESCENT NICOTINE INDUCES PERSISTING ALTERATIONS IN DENDRITIC STRUCTURE AND CONNECTIVITY IN NEURAL AREAS LINKED TO ADDICTION  
R.F. Smith

9:20-9:40 LONG LASTING CHANGES IN BEHAVIOR INDUCED BY ADOLESCENT AMPHETAMINE EXPOSURE ARE ASSOCIATED WITH DISRUPTIONS IN PREFRONTAL CORTEX FUNCTION  
J.M. Gulley

9:40-10:00 ADOLESCENT VULNERABILITY TO RELAPSE: A DOPAMINE STORY  
**J.H. Kim - David Kucharski Young Investigator Award Winner**

10:00-10:20 DISCUSSION

10:20-10:45 **Morning Break – Kon Tiki Foyer**

10:45-12:00 **Oral Session 3: BRAIN FUNCTION**  
Chair: Tania Roth – **Kon Tiki Ballroom**

10:45 - 11:00 OCCIPITAL CORTEX RESPONSES TO AN UNEXPECTED ABSENCE OF VISUAL INFORMATION: EVIDENCE FOR STATISTICALLY-MEDIATED CHANGES IN SENSORY CORTEX IN 6-MONTH-OLD HUMAN INFANTS  
L. L. Emberson, R. N. Aslin

11:00-11:15 AGE-RELATED CHANGES IN VISUAL CONTOUR INTEGRATION: IMPLICATIONS FOR PHYSIOLOGY FROM PSYCHOPHYSICS  
D. Hipp, A. Moser, K. Dickerson, P. Gerhardstein

11:15-11:30 TEMPORAL PROCESSING DEMANDS UNDERLIE ATTENTIONAL AND EXECUTIVE FUNCTION DEFICITS IN THE HIV-1 TRANSGENIC RAT  
C.F. Mactutus, L.M. Moran, R.M. Booze

11:30-11:45 MC4R KNOCKOUT RATS AND DIETARY-INDUCED OBESITY: CHANGES IN REWARD PROCESSING?  
R.F. Roscoe Jr., C.F. Mactutus, S.B. Harrod, D.K. Wilson, R.M. Booze.

11:45-2:00 **Mid-Day Break**

12:00-2:00 **Meet the Professors Lunch - Boardroom**

2:00- 3:30 **John Wiley Distinguished Speaker**  
SEXUAL DIFFERENTIATION: MERGING EVOLUTIONARY, GENOMIC, AND DEVELOPMENTAL PERSPECTIVES  
**Art Arnold – Kon Tiki Ballroom**

3:30-3:45 **Afternoon Break – Kon Tiki Foyer**



- 3:45-5:30      **Oral Session 4 and Awards Talks: CHILDHOOD**  
 Chair: Janice Juraska – *Kon Tiki Ballroom*
- 3:45-4:05      POSTURE DIFFERENTIALLY AFFECTS DIFFERENT  
 MOTOR PATTERNS IN THE NEWBORN RAT.  
**Sandra G. Weiner Award - S. Kauer**
- 4:05-4:30      EFFECTS OF PRENATAL ALCOHOL EXPOSURE ON  
 INTERACTIONS BETWEEN STRESS AND  
 DOPAMINE SYSTEMS: A POTENTIAL PATHWAY TO  
 INCREASED VULNERABILITY TO SUBSTANCE USE  
 DISORDERS  
**Dissertation Award - K. Uban**
- 4:30-4:45      ETHNICITY MODERATES THE INFLUENCE OF  
 CORTISOL ON EARLY CHILDHOOD BEHAVIORAL  
 DIFFICULTIES  
 A.I. Pintar, C. Blair
- 4:45-5:00      PERFORMANCE OF ADHD-DIAGNOSED AND  
 SCHOOL-BASED CHILDREN ON AN  
 ECOLOGICALLY VALID TASK  
 R. Hudson, E. Ulloa, M. Rosetti
- 5:00-5:15      THE ORIGINS OF CHILDHOOD DYSREGULATION:  
 PRENATAL DEPRESSION, 5-HTTLPR, AND  
 MATERNAL EDUCATION  
 V. Babineau, C. Gordon Green, A. Jolicoeur-Martineau,  
 R. Sassi, M. St-Andre, N. Carrey, J.L. Kennedy, M.  
 Meaney, A. Wazana
- 5:15-5:30      CUMULATIVE RISK AND GENOTYPE: DRD4, DRD2,  
 AND 5-HTTLPR INTERACT WITH PRENATAL  
 DEPRESSION TO PREDICT INFANT NEGATIVE  
 EMOTIONALITY  
 C. Gordon Green, V. Babineau, A.A Bouvette-Turcot,  
 A. Jolicoeur-Martineau, K. Minde, R. Sassi, M. St-  
 Andre, N. Carrey, J.L. Kennedy, M. Meaney, A.  
 Wazana
- 8:00-10:00      **Student Social - Boardroom**

**Saturday, November 9**

8:00-10:00           **Continental Breakfast and Coffee/Tea – Kon Tiki Foyer**

8:00-10:00           **Poster Session 2 – Aviary Ballroom**

1. COMPARISON OF AVERAGE FETAL HEART RATE (BPM) MEASUREMENTS USING ELECTROCARDIOGRAPHIC AND CARDIOTOCOGRAPHIC INSTRUMENTS. B.S. Kisilevsky, C.A. Brown
2. COVERT ORIENTING AND VISUAL ATTENTION IN 4-MONTH-OLD INFANTS. K.C. Dixon, S.M. Mosteller, M.W. Guy, L.E. McGirl, A.M. Scruggs, M.F. Singh, G.D. Reynolds
3. DYADIC FRONTAL EEG ASYMMETRY AND RSA DURING A MOTHER-CHILD TEACHING TASK. M.A. Bell, K. Deater-Deckard
4. MODULATION OF ATTENTION PRECEDES SPONTANEOUS EYE BLINKS. L.F. Bacher, S.S. Robertson
5. THE DEVELOPMENT OF INTERSENSORY PROCESSING OF SOCIAL AND NONSOCIAL EVENTS FROM INFANCY THROUGH CHILDHOOD. L.E. Bahrack, J.T. Todd, J.S. Saunders, P. Wurms
6. THE IMPACT OF SYMMETRY ON HIERARCHICAL PROCESSING IN 6-MONTH-OLD INFANTS. M.W. Guy, K.C. Dixon, S.M. Mosteller, J.H. Davis, S.R. Pilkay, L.E. McGirl, A.M. Scruggs, M.F. Singh, G.D. Reynolds
7. TRANSFER LEARNING ACROSS SOCIAL LEARNING CONTEXTS IN 2.5 AND 3-YEAR-OLDS. A. Moser, K. Dickerson, A. Grenell, H. Lee, L. Zimmermann, R. Barr, P. Gerhardstein
8. INFANT VISUAL ATTENTION AND NEURAL CORRELATES OF SACCADE PLANNING IN A SPATIAL CUEING TASK. S.M. Mosteller, M.W. Guy, K.C. Dixon, A.M. Scruggs, L.E. McGirl, M.F. Singh, G.D. Reynolds.
9. RELATION OF BIRTH ORDER, RISK-TAKING BEHAVIOR AND NOVELTY SEEKING IN TODDLERHOOD. H.J. Pelayo-Gonzalez, D. Espinosa-Villaseor, L. Quintanar-Rojas, M. Cueto-Aguirre Y. Solovieva
10. TASK FACTORS IMPACT SEARCH PERFORMANCE IN ADULTS AND CHILDREN. A.E. Learmonth
11. COMPARISON OF RESPONSE INHIBITION IN CHILDREN WITH PRENATAL ALCOHOL EXPOSURE AND CHILDREN WITH ADHD. A.L. Ware, L. Glass, S.N. Mattson
12. EARLY PARENTAL NURTURANCE AND ITS ROLE IN MEDIATING WORKING MEMORY AND BEHAVIOR IN YOUNG CHILDREN. E. Bridget-Polidore Reese, J. Brooks-Gunn, P. Klebanov, K.G. Noble
13. LATE ADOLESCENT CORTISOL AS A BIOMARKER FOR ADJUSTMENT DURING THE TRANSITION TO COLLEGE. S. E. Gans, V. Kahen Johnson
14. PARENT CORTISOL AS A BIOMARKER FOR LATE ADOLESCENT ADJUSTMENT DURING THE TRANSITION TO COLLEGE. V. Kahen Johnson, S. E. Gans
15. THE IMPORTANCE OF MATCHING VARIABILITY BETWEEN MATERNAL AND NON-MATERNAL ASPECTS OF THE NEONATAL ENVIRONMENT. S.M. Dinces, J.F.L. Pinner, R.D. Romeo, B.S. McEwen, A.C. Tang
16. FAMILY NURTURE INTERVENTION (FNI) MITIGATES MATERNAL ANXIETY EFFECT ON PRETERM INFANT PHYSIOLOGY IN STRESS PARADIGM. A.S. Grinberg, M.M. Myers, J. Austin, M.G. Welch
17. CONTRIBUTIONS OF MATERNAL CAREGIVING AND CHILD EXECUTIVE FUNCTION TO EARLY READING AND MATH SKILLS. K. Cuevas, K. Deater-Deckard, J. Kim-Spoon, M.A. Bell
18. SOCIOECONOMIC STATUS AND MATERNAL CORTISOL IN THE LATE POSTPARTUM. E. Finegood, C. Blair
19. ASSOCIATION BETWEEN MOTHER-CHILD CORTISOL LEVELS IN EARLY CHILDHOOD: STABILITY FROM INFANCY TO TODDLERHOOD AND MODERATION BY MATERNAL AND CHILD CHARACTERISTICS. L.C. Hibel, D.A. Granger, C. Blair, E D. Finegood, The Family Life Project Key Investigators
20. THE IMPACT OF EARLY LIFE ADVERSITY ON DIURNAL HPA AXIS FUNCTION ACROSS DEVELOPMENT. J. Flannery, L. Gabard-Durnam, D. Gee, K. Humphreys, B. Goff, D. Lumian

21. PLACENTAL CORTICOTROPIN-RELEASING HORMONE DECREASES WEIGHT IN EARLY INFANCY. S.A. Stout, E. Espel, L.M. Glynn, C.A. Sandman, E.P. Davis.
22. MEDIATING FACTORS BETWEEN EARLY ADVERSITY AND CHRONIC ILLNESSES: DISCRIMINATION, AFFECT SOLIDARITY, AND BIOMARKERS OF STRESS AND INFLAMMATION. K.M. O'Brien, C.L. Moore
23. THREAT DISCRIMINATION MODERATES THE RELATION BETWEEN BEHAVIORAL INHIBITION AND SOCIAL ANXIETY IN MIDDLE CHILDHOOD. T.V. Barker, B.C. Reeb-Sutherland, D.S. Pine, N.A. Fox
24. INFANT ATTACHMENT ASSOCIATED WITH PAIN PRODUCES LATER-LIFE DEPRESSIVE-LIKE BEHAVIOR THAT IS RESCUED BY MATERNAL ODOR AND INTRA-AMYGDALA SEROTONIN MANIPULATION. M. Rincn Corts, G.A. Barr, R.M. Sullivan
25. IMPACT OF NEONATAL PAIN-RELATED STRESS ON BRAIN AND IQ AT SCHOOL AGE IN CHILDREN BORN PRETERM. J. Vinall, R.E. Grunau, B.H. Bjornson, K.P.V. Fitzpatrick, K.J. Poskitt, R. Brant, A.R. Synnes, I.L. Cepeda, S.P. Miller
26. DELAY DISCOUNTING AND SUBSTANCE USE IN ADOLESCENTS. H. Edalati, C.G. Richardson
27. MRNA LEVELS OF EPIGENETIC REGULATORS WITHIN THE MEDIAL PREFRONTAL CORTEX ARE ALTERED BY EARLY-LIFE ADVERSITY. J. Blaze and T.L. Roth
28. TELOMERE LENGTH MODULATION IN BRAIN TISSUE OF RATS EXPOSED TO CAREGIVER MALTREATMENT. A. Asok, K. Bernard, J.B. Rosen, M. Dozier, T.L. Roth
29. NON-NUTRITIVE MATERNAL CARE IMPACTS NIPPLE ATTACHMENT LATENCIES IN C57BL/6 MOUSE PUPS. C.M. Rodda, S. Koyama, J.R. Alberts
30. DEVELOPMENTAL DEFICITS IN TEMPORAL PROCESSING IN THE HIV-1 TRANSGENIC RAT. L.M. Moran, R.M. Booze, C.F. Mactutus
31. PRE-PUBERTAL GONADECTOMY AND THE SOCIAL CONSEQUENCES OF ACUTE ETHANOL IN ADOLESCENT MALE AND FEMALE RATS. M. Morales, E.I. Varlinskaya, L.P. Spear
32. ADOLESCENT- VERSUS ADULT-ONSET COCAINE SELF-ADMINISTRATION IN RATS: AGE DIFFERENCES IN DRUG-PRIMED AND CUE-INDUCED REINSTATEMENT. I. Zbukvic, S. Luikinga, C. Perry, A.J. Lawrence, J. H. Kim.
33. ADOLESCENT AND ADULT RATS DIFFER IN THE AMNESIC EFFECTS OF ACUTE ETHANOL ON TWO HIPPOCAMPAL TASKS. P.S. Hunt, R.O. Carpenter
34. ONTOGENY OF OBJECT-IN-CONTEXT LEARNING IN THE RAT. A.I. Ramsaran, S.R. Westbrook, M.E. Stanton
35. ONTOGENY OF OBJECT RECOGNITION VS. OBJECT LOCATION PERFORMANCE IN THE RAT: ACQUISITION AND RETENTION EFFECTS. S.R. Westbrook, L.E. Brennan, M.E. Stanton
36. EFFECTS OF ADOLESCENT EXPOSURE TO BISPHENOL A ON NEURON NUMBER AND VOLUME IN THE PREFRONTAL CORTEX. L.M. Wise, R.N. Sadowski, S.L. Schantz, J.M. Juraska
37. ADULT NEURON AND GLIA NUMBER IN THE PREFRONTAL CORTEX OF MALE, BUT NOT FEMALE RATS, IS ALTERED BY DEVELOPMENTAL EXPOSURE TO BISPHENOL A. R.N. Sadowski, L.M. Wise, S.L. Schantz, J.M. Juraska
38. PRENATAL VISUAL STIMULATION INTERFERES WITH CONTINGENCY LEARNING IN BOBWHITE QUAIL NEONATES. N. Raju, L.E. Bahrack, R. Lickliter.
39. THERMOTACTILE STIMULATION INDUCES ODOR PREFERENCE IN C57BL/6 MICE. P. Meyer, J.R. Alberts
40. LONG TERM ALTERATIONS IN SOCIAL BEHAVIOR FOLLOWING PERINATAL ASPHYXIA AND C-SECTION OF FULL-TERM MALE RATS. J.A. Varholick, C.A. Tulbert, J.J. Morgan, G. Kleven, G.F. Michel, A.E. Ronca
41. SEX-SPECIFIC CLINICAL BLOOD GAS PROFILES IN PERINATAL RATS IMMEDIATELY FOLLOWING MODERATE INTRAUTERINE ASPHYXIA. J.J. Morgan, C.D. Tulbert, D.M. Eckman, A.E. Ronca

10:00-10:15	<b>Morning Break – Kon Tiki Foyer</b>	10:15-11:15	<b>Presidential Address</b> NEURAL DEVELOPMENT DURING ADOLESCENCE <b>Janice Juraska – Kon Tiki Ballroom</b>
10:15-11:15	<b>John Wiley Best Student Paper Award – Kon Tiki Ballroom</b>	11:15-12:15	<b>Business Meeting – All Invited – Kon Tiki Ballroom</b> <b>Poster Award</b>
		12:15	<b>End of ISDP Conference 2013</b>

---

**PLEASE JOIN US NEXT YEAR IN WASHINGTON, D.C.  
FOR THE 47<sup>TH</sup> ANNUAL MEETING OF THE  
INTERNATIONAL SOCIETY FOR DEVELOPMENTAL PSYCHOBIOLOGY**

**SAVE THE DATES NOVEMBER 12-15, 2014**

**ISDP Central Office**

8181 Tezel Road, #10269, San Antonio, TX 78250  
Phone: 830-796-9393 (Toll-free from within the US: 866-377-4416)  
Fax: 830-796-9394 - Email: [isdpc@isdpccentraloffice.org](mailto:isdpc@isdpccentraloffice.org)

<http://www.isdp.org>

**ISDP CONTACTS**  
**Affiliations and Email Addresses for Presenting Authors and Officers**

Adolph, Karen  
New York University  
[karen.adolph@nyu.edu](mailto:karen.adolph@nyu.edu)

Allmond, Jacob  
Idaho State University  
[allmjac2@isu.edu](mailto:allmjac2@isu.edu)

Asok, Arun  
University of Delaware  
[aasok@psych.udel.edu](mailto:aasok@psych.udel.edu)

Babik, Iryna  
UNCG  
[irbabik@gmail.com](mailto:irbabik@gmail.com)

Babineau, Vanessa  
McGill University  
[vanessa.babineau@mail.mcgill.ca](mailto:vanessa.babineau@mail.mcgill.ca)

Bacher, Leigh  
SUNY Oswego  
[leigh.bacher@oswego.edu](mailto:leigh.bacher@oswego.edu)

Bahrack, Lorraine  
Florida International University  
[bahrack@fiu.edu](mailto:bahrack@fiu.edu)

Barker, Tyson  
University of Maryland  
[tvbarker@umd.edu](mailto:tvbarker@umd.edu)

Bell, Martha Ann  
Virginia Tech  
[mabell@vt.edu](mailto:mabell@vt.edu)

Blaze, Jennifer  
University of Delaware  
[jblaze@psych.udel.edu](mailto:jblaze@psych.udel.edu)

Brumley, Michele  
Idaho State University  
[brummich@isu.edu](mailto:brummich@isu.edu)

Brummelte, Susanne  
University of British Columbia  
[sbrummelte@wayne.edu](mailto:sbrummelte@wayne.edu)

Burtchen, Nina  
Columbia University  
[nb2572@columbia.edu](mailto:nb2572@columbia.edu)

Campbell, Julie  
University of North Carolina Greensboro  
[jmcampb2@uncg.edu](mailto:jmcampb2@uncg.edu)

Capitania, John  
University of California, Davis  
[jpcapitania@ucdavis.edu](mailto:jpcapitania@ucdavis.edu)

Caruso, Michael  
Pennsylvania State University  
[mjc5038@psu.edu](mailto:mjc5038@psu.edu)

Cavigelli, Sonia  
Pennsylvania State University  
[Sac34@psu.edu](mailto:Sac34@psu.edu)

Chachra, Parul  
Tata Institute of Fundamental Research  
[findparulhere@gmail.com](mailto:findparulhere@gmail.com)

Cuevas, Kimberly  
University of Connecticut  
[kimberly.cuevas@uconn.edu](mailto:kimberly.cuevas@uconn.edu)

Dinces, Sarah  
University of New Mexico  
[sdinces@unm.edu](mailto:sdinces@unm.edu)

Dixon, Katherine  
University of Tennessee, Knoxville  
[kdixon3@utk.edu](mailto:kdixon3@utk.edu)

Doherty, Tiffany  
Idaho State University  
[dohetiff@isu.edu](mailto:dohetiff@isu.edu)

Ducz, Jennifer  
CUNY  
[jducz@qc.cuny.edu](mailto:jducz@qc.cuny.edu)

Duncan, Jhodie  
Florey Inst. of Neurosci & Mental Health  
[jhodie.duncan@florey.edu.au](mailto:jhodie.duncan@florey.edu.au)

Edalati, Hanie  
University of British Columbia  
[hanie.edalati@ubc.ca](mailto:hanie.edalati@ubc.ca)

Emberson, Lauren  
University of Rochester  
[lemberson@bcs.rochester.edu](mailto:lemberson@bcs.rochester.edu)

Filippa, Manuela  
Universite Paris Ouest Nanterre  
[manuela.filippa@gmail.com](mailto:manuela.filippa@gmail.com)

Finegood, Eric  
New York University  
[efinegoo@nyu.edu](mailto:efinegoo@nyu.edu)

Flannery, Jessica  
University of California, Los Angeles  
[jessicaflannery@gmail.com](mailto:jessicaflannery@gmail.com)

Gans, Susan  
West Chester University  
[sgans@wcupa.edu](mailto:sgans@wcupa.edu)

Gill, Simone  
Boston University  
[simgill@bu.edu](mailto:simgill@bu.edu)

Gobinath, Aarthi  
University of British Columbia  
[agobinath@psych.ubc.ca](mailto:agobinath@psych.ubc.ca)

Gordon Green, Cathryn  
McGill University  
[cathryn.gordongreen@mail.mcgill.ca](mailto:cathryn.gordongreen@mail.mcgill.ca)

Grinberg, Amy  
Columbia University  
[amybechar@gmail.com](mailto:amybechar@gmail.com)

Gross, Julien  
University of Otago  
[jules@psych.otago.ac.nz](mailto:jules@psych.otago.ac.nz)

Gulley, Joshua  
University of Illinois, Urbana-Champaign  
[jgulley@illinois.edu](mailto:jgulley@illinois.edu)

Guy, Maggie  
University of Tennessee  
[mriggs5@utk.edu](mailto:mriggs5@utk.edu)

Harris, Sierra  
Idaho State University  
[kauiesier@isu.edu](mailto:kauiesier@isu.edu)

Harshaw, Christopher  
Indiana University  
[chrisharshaw@yahoo.com](mailto:chrisharshaw@yahoo.com)

Hennessy, Michael B.  
Wright State University  
[michael.hennessy@wright.edu](mailto:michael.hennessy@wright.edu)

Herbert, Jane  
University of Sheffield  
[j.s.herbert@sheffield.ac.uk](mailto:j.s.herbert@sheffield.ac.uk)

Herrington, Joshua  
Florida International University  
[Joshuahvt@gmail.com](mailto:Joshuahvt@gmail.com)

Hester, Rob  
University of Melbourne  
[hesterr@unimelb.edu.au](mailto:hesterr@unimelb.edu.au)

Hibel, Leah  
Purdue University  
[hibel@purdue.edu](mailto:hibel@purdue.edu)

Hipp, Daniel  
Binghamton University  
[dhipp1@binghamton.edu](mailto:dhipp1@binghamton.edu)

Hudson, Robyn  
Univ. Nacional Autonoma de Mexico  
[rhudson@biomedicas.unam.mx](mailto:rhudson@biomedicas.unam.mx)

Hunt, Pamela S.  
College of William & Mary  
[pshunt@wm.edu](mailto:pshunt@wm.edu)

Juraska, Janice  
University of Illinois  
[jjuraska@illinois.edu](mailto:jjuraska@illinois.edu)

Johnson, Vanessa  
West Chester University  
[vjohnson@wcupa.edu](mailto:vjohnson@wcupa.edu)

Kabitzke, Patricia  
Psychogenics, Inc.  
[patricia.kabitzke@psychogenics.com](mailto:patricia.kabitzke@psychogenics.com)

Kleven, Gale  
Wright State University  
[gale.kleven@wright.edu](mailto:gale.kleven@wright.edu)

Kim, Jee Hyun  
University of Melbourne  
[jhkim@flore.y.edu.au](mailto:jhkim@flore.y.edu.au)

Kisilevsky, Barbara  
Queens University  
[kisilevb@queensu.ca](mailto:kisilevb@queensu.ca)

Kohn, Gregory  
Indiana University  
[kohn.gregory@gmail.com](mailto:kohn.gregory@gmail.com)

Kosten, Therese  
Baylor College of Medicine  
[tkosten@bcm.edu](mailto:tkosten@bcm.edu)

Krueger, Charlene  
University of Florida  
[ckrueger@ufl.edu](mailto:ckrueger@ufl.edu)

Lahav, Amir  
Harvard Medical School  
[amir@hms.harvard.edu](mailto:amir@hms.harvard.edu)

Latta, Jonathan  
Univ of North Carolina, Greensboro  
[jalatta@uncg.edu](mailto:jalatta@uncg.edu)

Learmonth, Amy  
William Paterson University  
[learmontha@wpunj.edu](mailto:learmontha@wpunj.edu)

Li, Xiang  
Queensland Brain Institute  
[x.li12@uq.edu.au](mailto:x.li12@uq.edu.au)

Lumian, Daniel  
University of California, Los Angeles  
[dlumian@gmail.com](mailto:dlumian@gmail.com)

Mactutus, Charles  
University of South Carolina  
[mactutus@sc.edu](mailto:mactutus@sc.edu)

Marcinowski, Emily  
Univ of North Carolina, Greensboro  
[ecmarcin@uncg.edu](mailto:ecmarcin@uncg.edu)

Marco, Asaf  
Bar-Ilan University  
[asafmarco@gmail.com](mailto:asafmarco@gmail.com)

Martinez, Eric  
Florida International University  
[emart241@fiu.edu](mailto:emart241@fiu.edu)

McBean, Amanda  
West Virginia University  
[amcbean@mix.wvu.edu](mailto:amcbean@mix.wvu.edu)

McKenney, Curtis  
Univ of North Carolina, Greensboro  
[camckenn@uncg.edu](mailto:camckenn@uncg.edu)

Mendez-Gallardo, Valerie  
Idaho State University  
[mendvale@isu.edu](mailto:mendvale@isu.edu)

Meyer, Paul  
Indiana University  
[pammeyer@indiana.edu](mailto:pammeyer@indiana.edu)

Montgomery-Downs, Hawley  
West Virginia University  
[hawley.montgomery-downs@mail.wvu.edu](mailto:hawley.montgomery-downs@mail.wvu.edu)

Morales, Melissa  
Binghamton University  
[mmorale2@binghamton.edu](mailto:mmorale2@binghamton.edu)

Moran, Landhing  
University of South Carolina  
[moranl@email.sc.edu](mailto:moranl@email.sc.edu)

Moser, Alecia  
Binghamton University  
[amoser1@binghamton.edu](mailto:amoser1@binghamton.edu)

Mosteller, Sara  
University of Tennessee, Knoxville  
[smostell@utk.edu](mailto:smostell@utk.edu)

Nelson, Eliza  
Florida International University  
[elnelson@fiu.edu](mailto:elnelson@fiu.edu)

Nelson, Eliza  
Florida International University  
[elnelson@fiu.edu](mailto:elnelson@fiu.edu)

O'Brien, Kimberlee  
University of Massachusetts at Boston  
[Kymberlee.obrien@umb.edu](mailto:Kymberlee.obrien@umb.edu)

O'Dell, Laura  
University Of Texas At El Paso  
[Lodell@Utep.Edu](mailto:Lodell@Utep.Edu)

Pelayo-Gonzalez, Hector  
Benemerita Univ Autonoma de Puebla  
[hecpe@hotmail.com](mailto:hecpe@hotmail.com)

Perry, Rosemarie  
New York University  
[Rosemarie.Perry@nyumc.org](mailto:Rosemarie.Perry@nyumc.org)

Pinner, John  
University of New Mexico  
[pinnerj@unm.edu](mailto:pinnerj@unm.edu)

Pintar, Alyssa  
New York University  
[aip252@nyu.edu](mailto:aip252@nyu.edu)

Popoola, Daniel  
Binghamton University  
[dpopool1@binghamton.edu](mailto:dpopool1@binghamton.edu)

Poulos, Andrew  
University at Albany  
[andrewmpoulos@gmail.com](mailto:andrewmpoulos@gmail.com)

Raju, Namitha  
Florida International University  
[namitha@gmail.com](mailto:namitha@gmail.com)

Ramsaran, Adam  
University of Delaware  
[adamr@udel.edu](mailto:adamr@udel.edu)

Reese, Emily  
Columbia University  
[ebp2118@tc.columbia.edu](mailto:ebp2118@tc.columbia.edu)

Reissland, Nadja  
Durham University  
[n.n.reissland@durham.ac.uk](mailto:n.n.reissland@durham.ac.uk)

Reyes, Veronica  
Universidad Veracruzana  
[veroreyes\\_161@hotmail.com](mailto:veroreyes_161@hotmail.com)

Reyes, Veronica  
Universidad Veracruzana  
[veroreyes\\_161@hotmail.com](mailto:veroreyes_161@hotmail.com)

Rincón Cortés, Millie  
NYU Sackler Institute  
[millie.rinconcortes@med.nyu.edu](mailto:millie.rinconcortes@med.nyu.edu)

Robinson, Scott  
Idaho State University  
[robiscot@isu.edu](mailto:robiscot@isu.edu)

Robinson-Drummer, Patrese  
University of Delaware  
[probinson@psych.udel.edu](mailto:probinson@psych.udel.edu)

Rodda, Cathleen  
Indiana University  
[roddac@indiana.edu](mailto:roddac@indiana.edu)

Ronca, April  
Wake Forest Univ School of Medicine  
[aronca@wfubmc.edu](mailto:aronca@wfubmc.edu)

Roscoe, Jr., Robert  
University of South Carolina  
[roscoerf@email.sc.edu](mailto:roscoerf@email.sc.edu)

Roth, Tania  
University of Delaware  
[troth@psych.udel.edu](mailto:troth@psych.udel.edu)

Sadowski, Renee  
Univ of Illinois at Urbana-Champaign  
[rnh Haag@illinois.edu](mailto:rnh Haag@illinois.edu)

Scher, Anat  
University of Haifa  
[anats@edu.haifa.ac.il](mailto:anats@edu.haifa.ac.il)

Schreiber, William  
University of Delaware  
[wbschreiber@gmail.com](mailto:wbschreiber@gmail.com)

Sharp, Andrew  
Southern Illinois Univ School of Medicine  
[asharp@siu-med.edu](mailto:asharp@siu-med.edu)

Smith, Robert  
George Mason University  
[bsmith@gmu.edu](mailto:bsmith@gmu.edu)

Soska, Kasey  
Florida International University  
[kcsoska@gmail.com](mailto:kcsoska@gmail.com)

Stout, Stephanie  
University of Denver  
[Stephanie.Stout@du.edu](mailto:Stephanie.Stout@du.edu)

Suarez, Michael  
Florida International University  
[msuar022@fiu.edu](mailto:msuar022@fiu.edu)

Swann, Hillary  
Idaho State University  
[swanhill@isu.edu](mailto:swanhill@isu.edu)

Susan Swithers  
Purdue University  
[swithers@purdue.edu](mailto:swithers@purdue.edu)

Taylor, Kathryn  
University of Delaware  
[ktaylor@psych.udel.edu](mailto:ktaylor@psych.udel.edu)

Ulrich, Beverly  
University of Michigan  
[bdulrich@umich.edu](mailto:bdulrich@umich.edu)

Varholick, Justin  
Univ of North Carolina, Greensboro  
[javarhol@uncg.edu](mailto:javarhol@uncg.edu)

Vinall, Jillian  
University of British Columbia  
[jvinall@cw.bc.ca](mailto:jvinall@cw.bc.ca)  
Ware, Ashley  
University of Houston  
[aware2004@gmail.com](mailto:aware2004@gmail.com)

Westbrook, Sara  
University of Delaware  
[swestbrook@psych.udel.edu](mailto:swestbrook@psych.udel.edu)

Wise, Leslie  
University of Illinois  
[wise2@illinois.edu](mailto:wise2@illinois.edu)

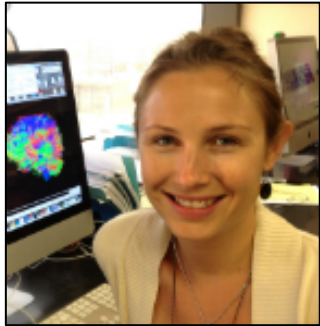
Yang, Jaynie  
University of Alberta  
[jaynie.yang@ualberta.ca](mailto:jaynie.yang@ualberta.ca)

Zbukvic, Isabel  
University of Melbourne  
[izbukvic@student.unimelb.edu.au](mailto:izbukvic@student.unimelb.edu.au)

Zepeda, Jose  
Centro Tlaxcala Biología De La Conducta  
[yateincube@hotmail.com](mailto:yateincube@hotmail.com)

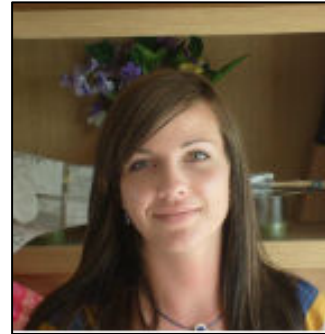
## ISDP 2013 AWARDS

### ***ISDP Dissertation Award***



**Kristina Uban.** Children's Hospital, Los Angeles, CA, USA (Joanne Weinberg-Advisor). This award honors outstanding scientists early in their careers and to help defray costs of attending the meeting. Winner of this award will do a special presentation of her dissertation at the annual meeting.

### ***Sandra G. Wiener Award***



**Sierra Kauer,** Idaho State University, USA (Michele R. Brumley-Advisor). This award was established in memory of Sandra Wiener to help defray costs of graduate students attending the annual meeting of ISDP. This award was established to honor Sandy for her interest and concern for students and her dedication and affection for ISDP.

### ***Kucharski Young Investigator Award***



**Jee Hyun Kim,** University of Melbourne, Australia. This award is given to honor the memory of David Kucharski, a promising young investigator in the field of Developmental Psychobiology. The winner of this award will be invited to give a special presentation of their work at the annual meeting.

#### **Registration Desk Hours**

<i>Wednesday</i>	5:00-8:00 pm
<i>Thursday</i>	7:00-8:30 am; 10:00-11:00; 11:30-12:00
<i>Friday</i>	7:00-8:30 am; 10:00-11:00; 12:00-12:30
<i>Saturday</i>	8:00-10:30 am

#### **Load Talks on Conference Computers**

<i>Wednesday</i>	6:00-8:00 pm
<i>Thursday</i>	7:00-8:00 am; 10:00-10:20; 11:35-1:30; 2:45-3:00
<i>Friday</i>	7:00-8:00 am; 10:20-10:45; 12:00-2:00; 3:30-3:45
<i>Saturday</i>	10:00-10:15 am



## ISDP 2013 Travel Awards

*Funding for these awards was generously provided by Wiley, Sackler Institute for Developmental Psychobiology at Columbia University, Eunice Kennedy Shriver National Institute of Child Health & Human Development, Mead Johnson Nutrition, Columbia University Nurture Science Program, and the Members of the International Society for Developmental Psychobiology.*

<b>Award Recipient</b>	<b>Advisor</b>	<b>Institution</b>	<b>Award Recipient</b>	<b>Advisor</b>	<b>Institution</b>
Jacob Allmond	Michele R. Brumley	Idaho State University	Curtis McKenney	George F. Michel	University of North Carolina at Greensboro
Arun Asok	Tania L. Roth	University of Delaware	Valerie Mendez-Gallardo	Michele R. Brumley	Idaho State University
Iryna Babik	George F. Michel	University of North Carolina at Greensboro	Paul Meyer	Jeffrey Alberts	Indiana University
Vanessa Babineau	Ashley Wazana	McGill University	Melissa Morales	Linda P. Spear	Binghamton University
Tyson Barker	Nathan Fox	University of Maryland	Landhing Moran	Charles F. Mactutus	University of South Carolina
Jennifer Blaze	Tania L. Roth	University of Delaware	Alecia Moser	Peter Gerhardtstein	Binghamton University
Nina Burtchen	Michael M. Myers	Columbia University	Sara Mosteller	Greg Reynolds	University of Tennessee, Knoxville
Julie Campbell	George Michel	University of North Carolina at Greensboro	Kymberlee O'Brien	Celia L. Moore	University of Massachusetts at Boston
Michael Caruso	Sonia A. Cavigelli	Pennsylvania State University	Rosemarie Perry	Regina M. Sullivan	New York University
Parul Chachra	Vidita A. Vaidya	Tata Institute of Fundamental Research	John Pinner	Akaysha Tang	University of New Mexico
Sarah Dinces	Akaysha Tang	University of New Mexico	Alyssa Pinter	Clancy Blair	New York University
Katherine Dixon	Greg Reynolds	University of Tennessee, Knoxville	Daniel Popoola	Nicole Cameron	Binghamton University
Tiffany Doherty	Michele R. Brumley	Idaho State University	Namitha Raju	Robert. Lickliter	Florida International University
Jennifer Ducz	Sarah Berger	CUNY	Adam Ramsaran	Mark E. Stanton	University of Delaware
Hanie Edalati	Marvin D. Krank	University of British Columbia	Emily Reese	Kim Noble	Columbia University
Lauren Emberson	Richard Aslin	University of Rochester	Veronica Reyes	Robyn Hudson	Universidad Veracruzana
Manuela Filippa	Maya Gratier	Universite Paris Quest Nanterre	Millie Rincón Cortés	Regina M. Sullivan	NYU Sackler Institute
Eric Finegood	Clancy Blair	New York University	Patrese Robinson-Drummer	Mark E. Stanton	University of Delaware
Jessica Flannery	Nim Tottenham	University of California, Los Angeles	Cathleen Rodda	Jeffrey Alberts	Indiana University
Aarthi Gobinath	Liisa Galea	University of British Columbia	Robert Roscoe Jr.	Charles F. Mactutus	University of South Carolina
Cathryn Gordon Green	Ashley Wazana	McGill University	Renee Sadowski	Janice Juraska	University of Illinois at Urbana-Champaign
Maggie Guy	Greg Reynolds	University of Tennessee, Knoxville	William Schreiber	Mark E. Stanton	University of Delaware
Christopher Harshaw	Jeffrey Alberts	Indiana University	Kasey Soska	Lorraine Bahrack	Florida International University
Joshua Herrington	Robert Lickliter	Florida International University	Stephanie Stout	Elysia Davis	University of Denver
Daniel Hipp	Peter Gerhardtstein	Binghamton University	Michael Suarez	Robert Lickliter	Florida International University
Gregory Kohn	Meredith West	Indiana University	Hillary Swann	Michele R. Brumley	Idaho State University
Jonathan Latta	George Michel	University of North Carolina at Greensboro	Kathryn Taylor	Tania L. Roth	University of Delaware
Xiang Li	Timothy Bredy	Queensland Brain Institute	Justin Varholick	George F. Michel	University of North Carolina at Greensboro
Daniel Lumian	Nim Tottenham	University of California, Los Angeles	Ashley Ware	Sarah Mattson	University of Houston
Emily Marcinowski	George F. Michel	University of North Carolina at Greensboro	Sara Westbrook	Mark E. Stanton	University of Delaware
Asaf Marco	Aron Weller	Bar-Ilan University	Leslie Wise	Janice Juraska	University of Illinois
Eric Martinez	Robert Lickliter	Florida International University	Isabel Zbukvic	Jee Hyun Kim	University of Melbourne
Amanda McBean	Hawley Montgomery-Downs	West Virginia University	Jose Zepeda	Amando Bautista	Universidad Autonoma de Tlaxcala

## Program-at-a-Glance

### Wednesday, November 6

- 2:30-5:30 Pre-conference: The International Perinatal Brain and Behavior Network – *Marquesas Suite #308*
- 5:00-8:00 ISDP Registration – *Main Lobby*
- 5:30-7:30 ISDP Board Meeting – *Boardroom*
- 8:00-10:00 ISDP Opening Reception - *Aviary Ballroom*

### Thursday, November 7

- 7:00-8:00 Student/Post-doc Breakfast Chat Session; Continental Breakfast and Coffee/Tea – *Boardroom*
- 7:00-8:30 ISDP Registration - *Kon Tiki Foyer*
- 8:00-10:00 Symposium: Developmental plasticity in the control and functional recovery of motor behavior – *Kon Tiki Ballroom*
- 10:00-10:20 Morning Break – *Kon Tiki Foyer*
- 10:20-11:35 Oral Session 1: Social Skills and Learning – *Kon Tiki Ballroom*
- 11:35-1:30 Mid-Day Break; Wiley Editorial Lunch - *Boardroom*
- 1:30-2:45 Oral Session 2: Maternal Influences – *Kon Tiki Ballroom*
- 2:45-3:00 Afternoon Break – *Kon Tiki Foyer*
- 3:00-4:45 Sackler Symposium: Communicating developmental psychobiology – *Kon Tiki Ballroom*
- 5:30-7:30 Poster Session 1 (Cash Bar) - *Aviary Ballroom*

### Friday, November 8

- 7:00-8:00 Continental Breakfast and Coffee/Tea - *Kon Tiki Foyer*
- 8:00-10:20 Symposium: Experiences with drugs during adolescence: Potential mechanisms of adolescent vulnerability to addiction as revealed by animal models – *Kon Tiki Ballroom*
- 10:20-10:45 Morning Break – *Kon Tiki Foyer*
- 10:45-12:00 Oral Session 3: Brain Function – *Kon Tiki Ballroom*
- 12:00-2:00 Mid-Day Break; Meet the Professors Lunch - *Boardroom*
- 2:00- 3:30 John Wiley Distinguished Speaker: Art Arnold – *Kon Tiki Ballroom*
- 3:30-3:45 Afternoon Break – *Kon Tiki Foyer*
- 3:45-5:30 Oral Session 4 and Awards Talks: Childhood – *Kon Tiki Ballroom*
- 8:00-10:00 Student Social - *Boardroom*

### Saturday, November 9

- 8:00-10:00 Continental Breakfast and Coffee/Tea – *Aviary Ballroom*
- 8:00-10:00 Poster Session 2 foyer - *Aviary Ballroom*
- 10:00-10:15 Morning Break – *Kon Tiki Foyer*
- 10:15-11:15 John Wiley Best Student Paper Award; Presidential Address: Janice Juraska – *Kon Tiki Ballroom*
- 11:15-12:15 Business Meeting – All Invited & Poster Award – *Kon Tiki Ballroom*
- 12:15 End of ISDP Conference 2013